

Yamaha HiFi USB Driver Installation Guide

Contents

Information	1
What is Yamaha HiFi USB Driver?	1
Installing Yamaha HiFi USB Driver	2
Control Panel of the Driver.....	3
Uninstalling Yamaha HiFi USB Driver.....	5
Troubleshooting	6

Information

- This software and Installation Guide are the exclusive copyrights of Yamaha Corporation.
- Copying of the software or reproduction of this Installation Guide in whole or in part by any means is expressly forbidden without the written consent of the manufacturer.
- Yamaha makes no representations or warranties with regard to the use of the software and documentation and cannot be held responsible for the results of the use of this Installation Guide and the software.
- All illustrations and screenshots in this installation guide are provided for instructional purposes.
- Windows is the registered trademark of Microsoft® Corporation.
- The company names and product names in this manual are the trademarks or registered trademarks of their respective companies.
- Copying of the commercially available musical data and/or audio data is strictly prohibited except for your personal use.

What is Yamaha HiFi USB Driver?

The Yamaha HiFi USB Driver enables communication between a USB device (which is compatible with the Yamaha HiFi USB Driver) and your computer.

Installing Yamaha HiFi USB Driver

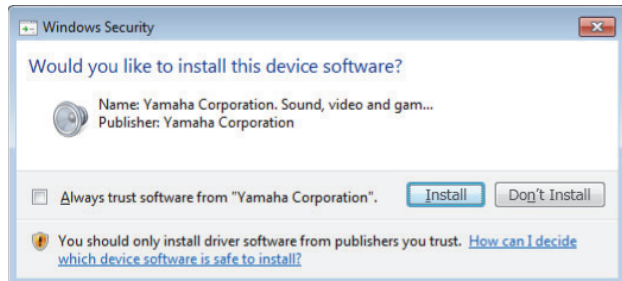
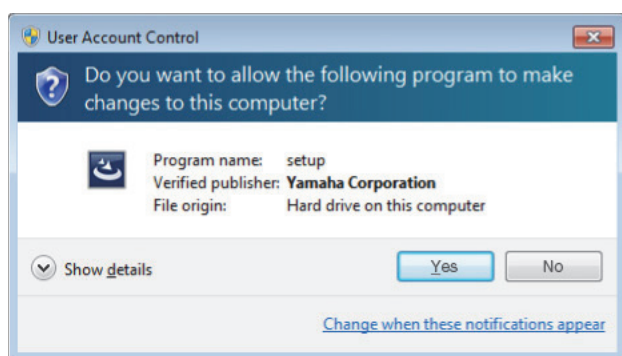
NOTE

- You are only permitted to use this software pursuant to the terms and conditions of the “License Agreement” shown during the installation.
- If the same software components have already been installed in your computer, you can use the same procedure as described in the installation instructions here to update the software.

Windows

Preparation

If the following warning messages appear during the installation, click [Continue Anyway], [Yes], or [Install].



Installation

- 1 Turn off the computer.**
- 2 Disconnect all USB devices other than the mouse and keyboard from the computer.**
- 3 Start the computer and log on to the Administrator account.**
- 4 Double-click “YamahaHiFiUSBDriver_DriverSetup_vx.x.x.exe” in the compressed file you have downloaded.**
- 5 Follow the on-screen instructions to install the software.**
- 6 When installation has been completed, click [Finish].**
If a window requiring you to restart your computer appears, follow the on-screen instructions and restart the computer.

Device Connection

- 7 Connect the device directly to the computer by using a USB cable.**
Make sure to not connect it to a USB hub.
- 8 Turn on the device, then switch the input source to “USB.”**
- 9 Wait until the installation of the device driver software completes.**
Installation of the device driver software will start automatically.
You can check whether the installation has completed in the taskbar or the Device Manager.

Confirmation of Installation

- 10 Open the “Device Manager” window as follows.**
Click [Control Panel] → ([Hardware and Sound]) → [Device Manager]
- 11 Click on the [+] mark or [>] mark next to “Sound, video and game controllers.”**
- 12 Confirm that the device name you are using is listed.**

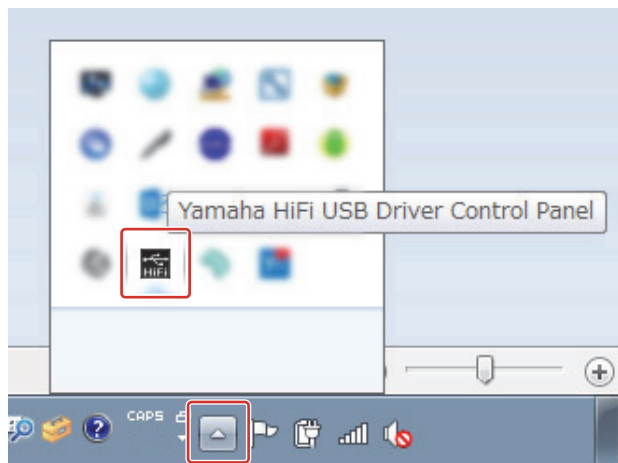
Installation of the Yamaha HiFi USB Driver is now complete.

Control Panel of the Driver

This is the control panel for selecting the general settings of the audio driver. Click the upper tabs to select the desired window.

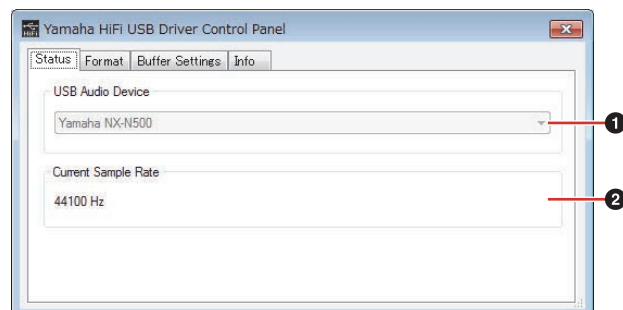
How to Open the Window

The control panel icon is added to the taskbar after the driver has been installed.



Panel Controls

Status Window



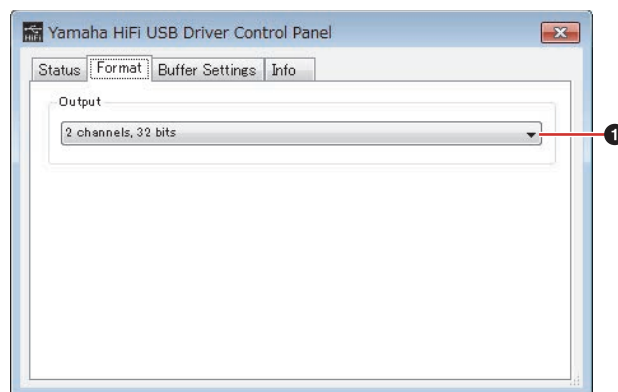
1 USB Audio Device

Indicates the name of the connected device.

2 Current Sample Rate

Indicates the sample rate of the audio data currently played back.

Format Window

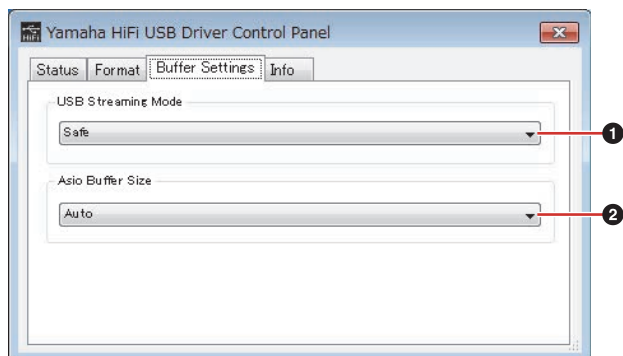


1 Output

Sets the bit length for audio data transfer.

- 2 channels, 32 bits: Plays back audio of up to 32 bits (default).
- 2 channels, 24 bits: Plays back audio of up to 24 bits.

Buffer Settings Window



1 USB Streaming Mode

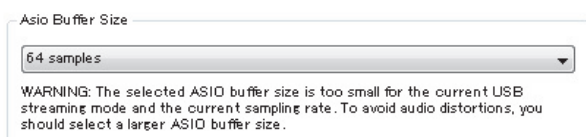
Sets the delay time (latency) of the audio data between Yamaha HiFi USB Driver and the USB layer. Regardless of the sample rate of the audio data currently played back, set the delay time in millisecond units.

- Minimum Latency: 1 msec (the smallest delay time and buffer size)
- Low Latency: 2 msec
- Standard: 4 msec
- Relaxed: 8 msec
- Reliable: 12 msec
- Safe: 16 msec (default)
- Extra Safe: 32 msec (the largest delay time and buffer size)

2 Asio Buffer Size

Selects the buffer size for the ASIO driver. The higher the value (number of samples), the larger the delay time and buffer size. The buffer size must be large enough for the USB Streaming Mode setting. If the following warning message appears, increase the value until the message no longer appears.

Usually, you do not need to change the setting from "Auto" (default).

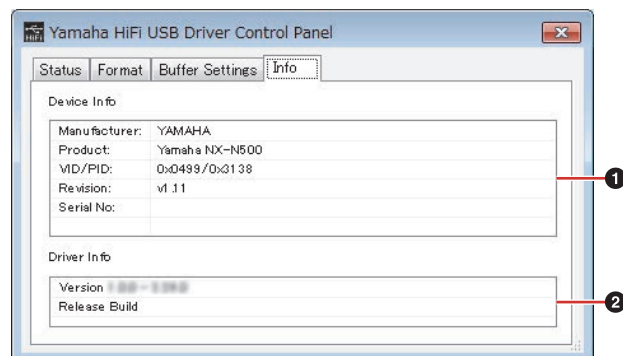


Auto (default): Adjusts the buffer size automatically to be large enough for the USB Streaming Mode setting.

TIP

When you use multiple applications or noise is produced by the load to the computer, audio may not be played back properly. In most cases, you can solve these problems by adjusting the audio driver buffer size (the size of memory used to temporarily hold data to avoid intermittent playback). While a larger buffer size reduces the load to the computer CPU but produces latency (time lag) during playback, a smaller buffer size may result in noise or the sound being cutting off. Be sure to set the buffer size to an appropriate value depending on the performance of your computer, the number of applications running, and so on.

Info Window



1 Device Info

Indicates information about the connected device.

2 Driver Info

Indicates the version of Yamaha HiFi USB Driver.

Uninstalling Yamaha HiFi USB Driver

Windows

- 1** Disconnect all other USB devices except mouse and keyboard from the computer.
- 2** Start the computer and log on to the Administrator account.
Exit any open applications and close all open windows.
- 3** Open the window for the uninstall operation as follows.
Select [Control Panel] → [Uninstall a Program] to call up the “Uninstall or change a program” panel.
- 4** Select “Yamaha HiFi USB Driver” from the list.
- 5** Uninstall them as follows.
Click the [Uninstall] / [Uninstall / Change].
If the “User Account Control” window appears, click [Continue] or [Yes].
Follow the on-screen instructions to remove the software.

Uninstallation of the Yamaha HiFi USB Driver is now complete.

Troubleshooting

No sound.

- **Are the volume controls of your sources, audio devices, applications software, computer operating system, etc., set at appropriate levels?**
- **Is the output of your computer operating system muted?**
- **Do you have several applications running at the same time?**
Be sure to quit all applications you are not using.

Noise occurs, or the sound is intermittent or distorted.

- **Does your computer satisfy the system requirements?**
Refer to "System Requirements for software" described on the download website.
- **Is the buffer size setting of the Yamaha HiFi USB Driver set properly?**
Refer to the "Control Panel of the Driver" on page 3.
- **Are any other applications, device drivers, or USB devices (scanners, printers, etc.) running at the same time?**
Be sure to quit all applications you are not using.
- **Are you playing back a large number of audio tracks?**
The number of tracks you can play at the same time will depend on the performance of the computer you are using. You may experience intermittent playback if you exceed your computer's capabilities.
- **Are you recording or playing long continuous sections of audio?**
The audio data processing capabilities of your computer will depend on a number of factors including CPU speed and access to external devices.
- **Is the network adaptor running?**
Disable the suspected network adaptor. Some network adaptors can cause noise.

Installation of the device driver software fails.

- **Has the latest update been applied to Windows 7 Service Pack 1?**
If you are using Windows 7 Service Pack 1, check that the following update has been applied.
Security Update for Windows 7 (KB3033929)
<https://www.microsoft.com/en-US/download/details.aspx?id=46148>