



MUSIC PRODUCTION SYNTHESIZER

# MOTIF XS

## Using Display Templates



Version 1.50 of the MOTIF XS firmware saw the introduction of a new feature for customizing the design of displays using display templates. Yamaha has prepared a range of display templates for use with this feature. In order to make use of these templates, you will need to transfer them to your MOTIF XS using the network file-sharing function or a USB flash-memory device. Following the steps outlined below, you can then use these display templates to customize the appearance of MOTIF XS displays.

## Contents

<b>Transferring Display Templates via a Network.....</b>	<b>2</b>
<b>Connecting your MOTIF XS and Computer via a Network.....</b>	<b>2</b>
<b>Configuring the Network.....</b>	<b>2</b>
Network Settings on MOTIF XS .....	2
Network Settings on Computer .....	3
Windows XP Settings.....	3
Mac OS X 10.5 (Leopard) Settings .....	5
Mac OS X 10.4 (Tiger) Settings .....	7
<b>Copying a Display Template onto the MOTIF XS .....</b>	<b>8</b>
<b>Restoring the Original Displays .....</b>	<b>9</b>
<b>Transferring Display Templates via USB Flash Memory .....</b>	<b>10</b>
<b>Restrictions on Display Template Usage.....</b>	<b>10</b>

## SPECIAL NOTICE

- Copying of the commercially available musical data and content data including but not limited to MIDI data and/or audio data is strictly prohibited except for your personal use.
- The display templates and this manual are the exclusive copyrights of Yamaha Corporation.
- Copying of the display templates or reproduction of this manual in whole or in part by any means is expressly forbidden without the written consent of the manufacturer.
- Yamaha makes no representations or warranties with regard to the use of the display templates and documentation and cannot be held responsible for the results of the use of this manual and the data.
- Future upgrades of application and system software, any changes in specifications and functions, and any changes of the display templates data will be announced separately.
- The screen displays as illustrated in this manual are for instructional purposes, and may appear somewhat different from the screens which appear on your computer.
- Windows is a registered trademark of Microsoft® Corporation in the United States and other countries.
- Apple, Mac and Macintosh are trademarks of Apple Inc., registered in the U.S. and other countries.
- The company names and product names in this manual are the trademarks or registered trademarks of their respective companies.

© 2009 Yamaha Corporation. All rights reserved.

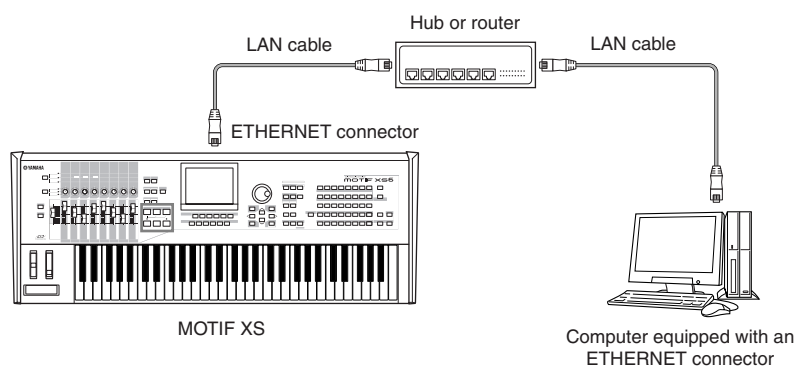
# Transferring Display Templates via a Network

Follow the instructions outlined below to customize the appearance of displays with display templates by employing your instrument's ability to share files over a network.

**NOTE** Before starting this procedure, ensure that your MOTIF XS firmware has been upgraded to version 1.50 or later. For details regarding firmware upgrades, visit the following web page.  
<http://www.yamahasynt.com/products/motifxs/index.html>

## Connecting your MOTIF XS and Computer via a Network

The MOTIF XS can be connected to a local area network (LAN) using a standard Ethernet cable. When connected in this way, the File mode allows you save files created on your instrument to a computer on the same network. In order to do so, connect the MOTIF XS to a router or hub using an Ethernet cable. Then, connect your computer to the router or hub using an Ethernet cable or via wireless connection.



**NOTE** Ensure that you use straight-through Ethernet cables.

**NOTE** Due to EU regulations, users within Europe should use STP (shielded twisted pair) cables to prevent electromagnetic interference.

**NOTE** If your computer is not equipped with an ETHERNET connector, install a commercially-available LAN adaptor into its PCI slot or PC Card slot.

**NOTE** If you employ a broadband router to connect your computer to the Internet, use a vacant ETHERNET connector on the router to connect the MOTIF XS. Bear in mind, however, that this does not connect the MOTIF XS to the Internet, only to other computers and drives on the same network.

## Configuring the Network

When you have successfully connected your MOTIF XS and computer via a network, you will need to configure the network to allow files to be exchanged. Despite the fact that these two devices are now physically joined, they will not be able to access each other via the network until these software settings have been completed correctly.

## Network Settings on MOTIF XS

### 1. Call up the Network display of the Utility mode.

Press the [UTILITY] button to enter the Utility mode, and then press the [F1] General button followed by the [SF3] Network button to call up the Network display.

2. Press the [SF5] Password button to open the File Server Password display, and set a password for accessing the MOTIF XS from your computer.

In order to enter a password, press the [SF6] CHAR button to call up the Input Character window. Passwords must be between 5 and 8 characters in length. For details regarding the input of characters, see page 82 of your MOTIF XS6/7/8 Owner's Manual.

When you have input a password as required, press the [ENTER] button to close the File Server Password display.

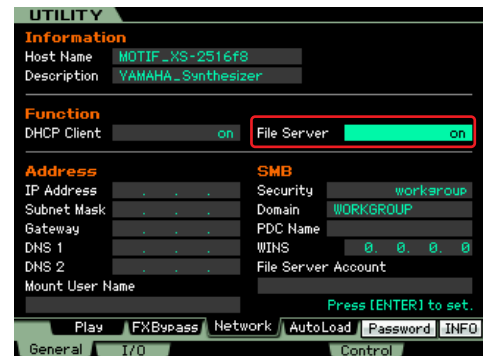


3. Set the File Server parameter to "on".

You will now be able to access the MOTIF XS from a computer using the account name "nobody".

**NOTE** If necessary, you can set an account name other than "nobody" in the File Server Account field.

4. Press the [ENTER] button and confirm that the network settings are as required. If necessary, press the [STORE] button to store your new settings.

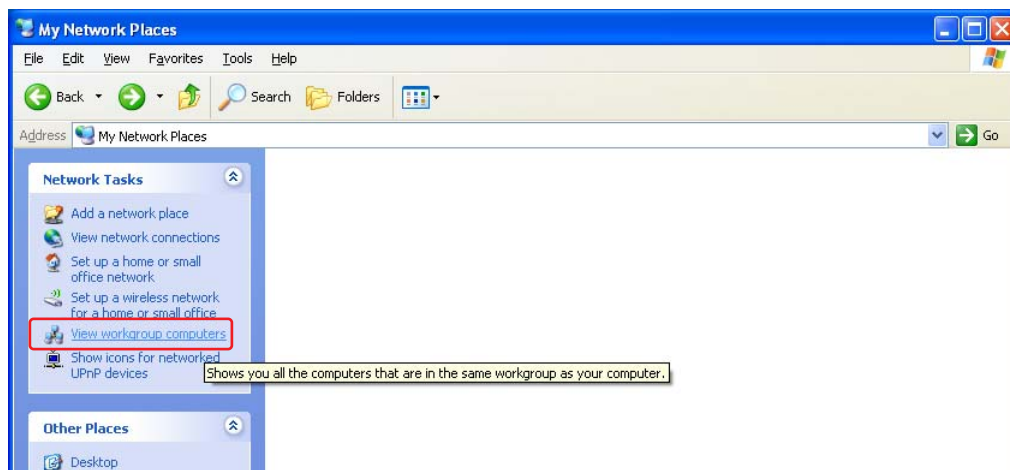


## Network Settings on Computer

**NOTE** As a result of certain other settings on your computer, screen displays and the like may not be exactly as shown below.

### Windows XP Settings

5. Open "My Network Places", followed by "View workgroup computers".



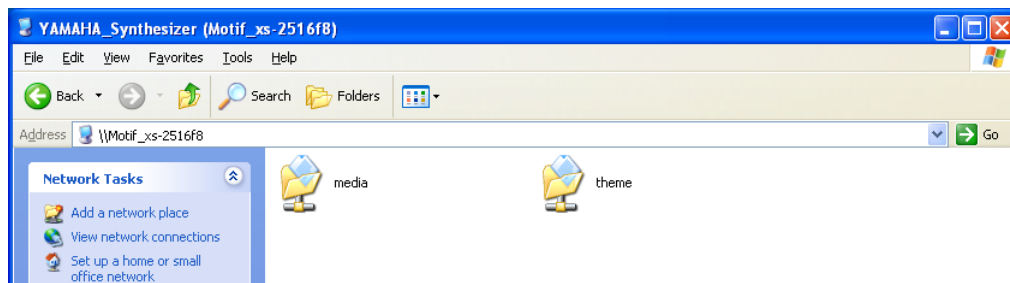
**NOTE** If your computer's workgroup is not the same as that entered into the [Domain] field on your MOTIF XS (Network display in the Utility mode), open Microsoft Windows Network and create a domain with that name.

6. Open "YAMAHA\_Synthesizer (Motif\_xs-2516f8)".

The name "YAMAHA\_Synthesizer (Motif\_xs-2516f8)" assumes that [Host Name] has been set to "MOTIF\_XS-2516f8" and [Description] has been set to "YAMAHA\_Synthesizer" on the Utility mode's Network display.

## 7. Enter the user name (i.e., account name) and password that you set in the Network Settings on MOTIF XS section above.

Two network folders will be displayed — “theme”, which contains display data for the MOTIF XS being accessed, and “media”, which contains data from the connected USB memory device.

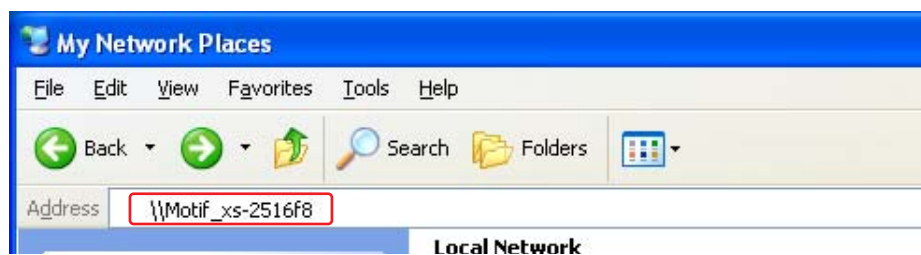


### Accessing the MOTIF XS by Entering a Host Name

In cases where the MOTIF XS cannot be accessed by the method described above, an alternative approach is to enter the host name set on the instrument directly into the Windows Address Bar. In such a case, you will need to enter “\” in front of the MOTIF XS host name.

For example, if the host name is set as “MOTIF\_XS-2516f8”, enter “\\MOTIF\_XS-2516f8” into the Address Bar.

**NOTE** You can confirm the MOTIF XS host-name setting on the Network display in the Utility mode.



## Mac OS X 10.5 (Leopard) Settings

### 5. From the Menu Bar, click “Go” and then “Connect to Server...”.

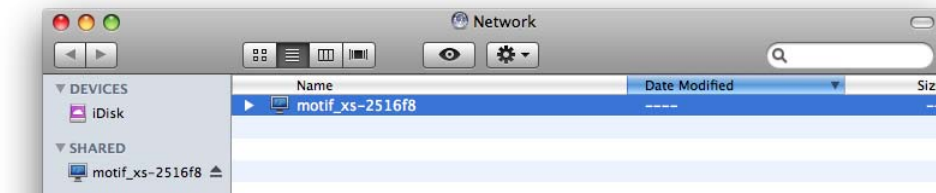
The Connect to Server dialog will open.

### 6. Click the [Browse] button.

The Network screen will open.

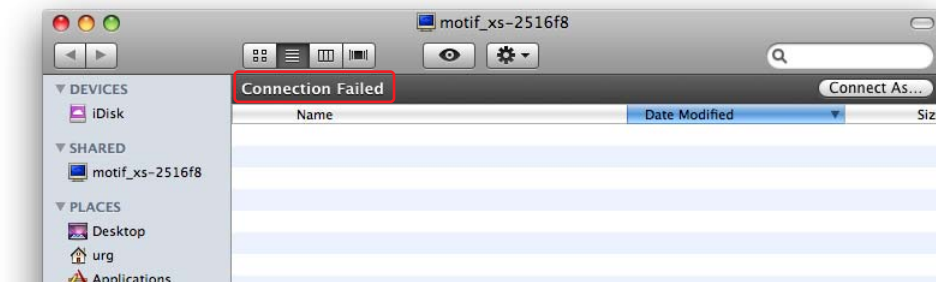
### 7. From the displayed list of servers, click the one with the MOTIF XS host name.

For example, if [Host Name] has been set to “MOTIF\_XS-2516f8” on the instrument, click the server named “motif\_xs-2516f8”.



**NOTE** If the list of servers does not contain an entry in the form “motif\_xs-\*\*\*\*\*”, see the section Accessing the MOTIF XS by Entering a Host Name below.

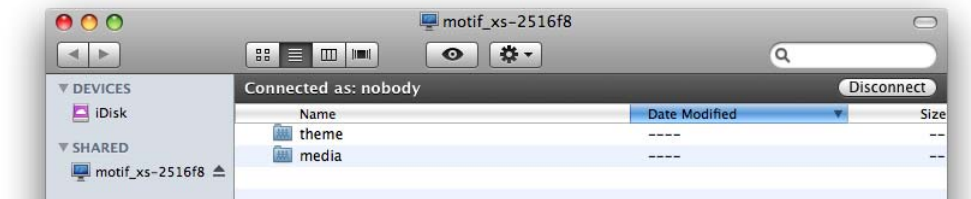
### 8. If the message “Connection Failed” is displayed, click the [Connect As...] button.



### 9. Enter the user name (i.e., account name) and password that you set in the Network Settings on MOTIF XS section above, and then click the [Connect] button.



10. Your Mac will access the MOTIF XS, and two network folders will be displayed – “theme”, which contains display data for the MOTIF XS, and “media”, which contains data from the connected USB memory device.



### Accessing the MOTIF XS by Entering a Host Name

In cases where the MOTIF XS cannot be accessed by the method described above, an alternative approach is to enter the host name set on the instrument directly into the Connect to Server dialog.

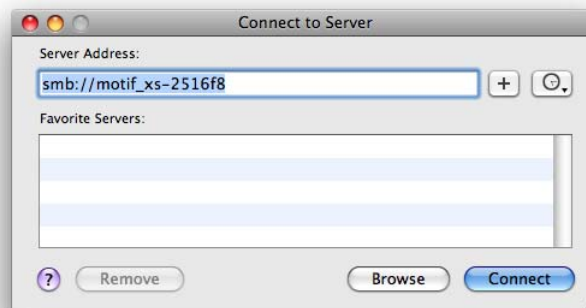
1. From the Menu Bar, click “Go” and then “Connect to Server...”.

The Connect to Server dialog will open.

2. In the Server Address: field, enter “smb://” followed by the MOTIF XS host name, and then click the [Connect] button.

For example, if the host name is set as “MOTIF\_XS-2516f8”, enter “smb://MOTIF\_XS-2516f8”.

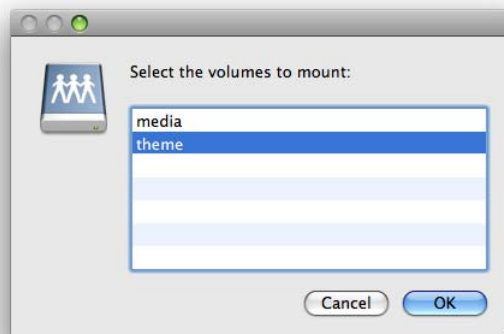
**NOTE** You can confirm the MOTIF XS host-name setting on the Network display in the Utility mode.



3. Enter the user name (i.e., account name) and password that you set in the Network Settings on MOTIF XS section above, and then click the [Connect] button.

4. Select “theme” as the volume to mount, and then click the [OK] button.

The “theme” folder, containing MOTIF XS display data, will be mounted.



## Mac OS X 10.4 (Tiger) Settings

### 5. Click “Network” in a Finder window.

A Network window containing the server “MOTIF\_XS” will open.

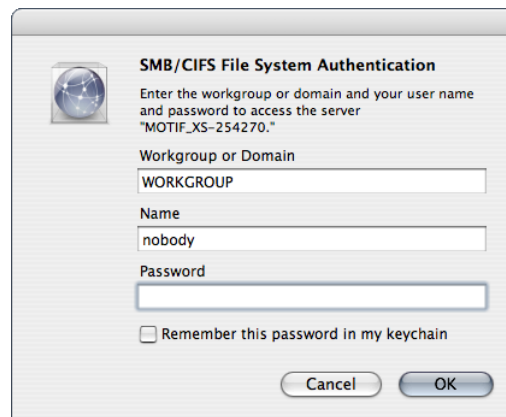
### 6. Double-click “MOTIF\_XS”.

### 7. Select “theme” as the SMB/CIFS shared volume and then click the [Authenticate] button.

The SMB/CIFS File System Authentication dialog will open.

### 8. Enter the domain, user name (i.e., account name), and password that you set in the Network Settings on MOTIF XS section above, and then click the [OK] button.

The “theme” folder, containing MOTIF XS display data, will be mounted.



**NOTE** In cases where the MOTIF XS cannot be accessed by the method described above, an alternative approach is to directly enter the host name set on the instrument. For details, see the above Mac OS X section Accessing the MOTIF XS by Entering a Host Name.

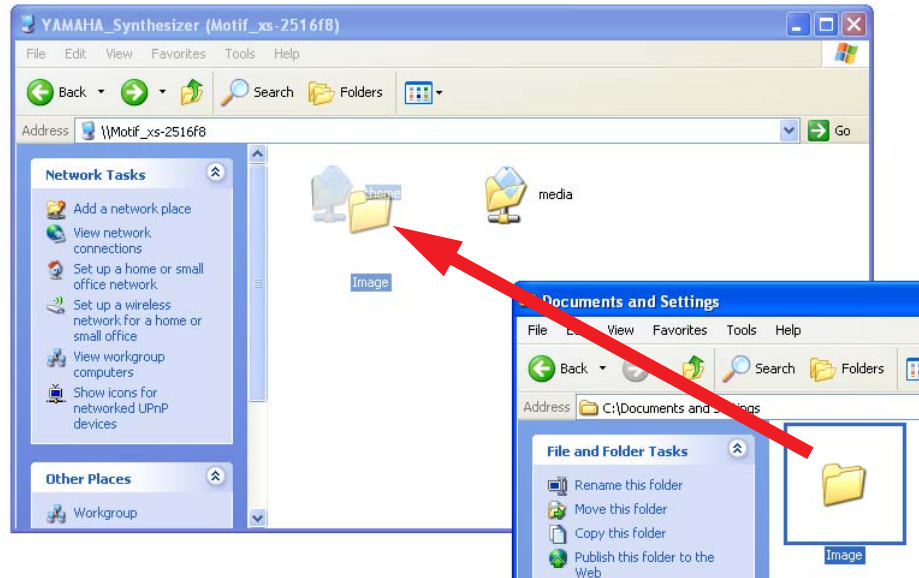


## Copying a Display Template onto the MOTIF XS

1. Inside the “Type” folder created by expanding the downloaded zip file, click the folder corresponding to the number of the display template you wish to use.

**NOTE** For details regarding display designs for each template number, visit the following web page.  
<http://www.yamahasyth.com/products/motifxs/index.html>

2. Copy the “Image” folder into the MOTIF XS “theme” folder.



**NOTE** If your computer tells you that a folder named “Image” already exists inside the “theme” folder, proceed by indicating that you wish to overwrite or replace all items.

3. Reboot the MOTIF XS.

The MOTIF XS displays will have changed to reflect the copied display template.

**NOTE** If you were to continue to use the MOTIF XS without rebooting it at this time, some but not all of the display template would be applied. In order to apply the display template in full, therefore, ensure that you turn the instrument off and back on.



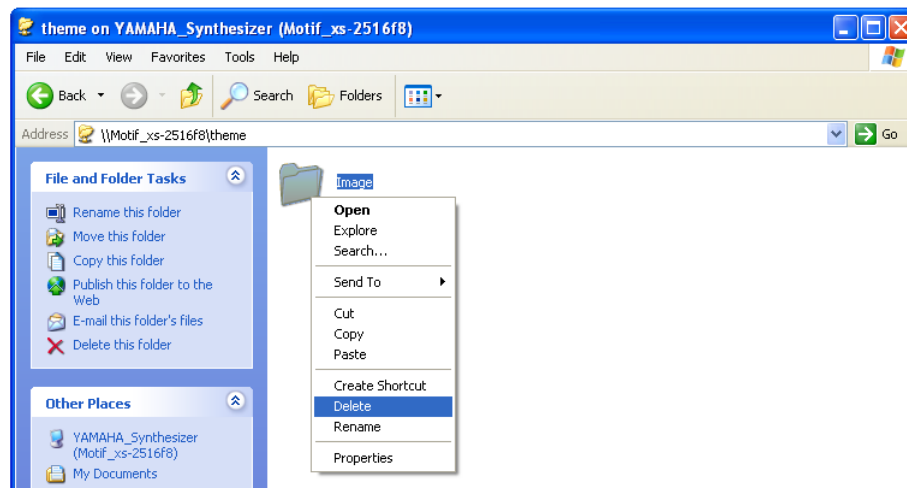
## Restoring the Original Displays

If you would like to restore the original MOTIF XS display designs after customizing them using display templates, proceed as follows.

1. As explained in the section **Configuring the Network** above, mount the “theme” folder from the MOTIF XS on your computer.
2. Delete the “Image” folder contained within that “theme” folder.

### **CAUTION**

This action will permanently delete your customized MOTIF XS displays. If you would like to keep a copy of this design data for use at a later date, therefore, copy the “Image” folder onto your computer as a backup.



3. Reboot the MOTIF XS.

The original display designs will be restored.

As an alternative to the above approach, you can also restore the original display design by executing the Factory Set. To do so, press the [UTILITY] button, followed by the [JOB] button. For details regarding the Factory Set, see page 22 of your MOTIF XS6/7/8 Owner's Manual.

# Transferring Display Templates via USB Flash Memory

As an alternative to the above-described method, you can also use a USB flash-memory device to transfer display-template files to your MOTIF XS in order to customize displays. To do so, follow the steps described below.

**NOTE** Before starting this procedure, ensure that your MOTIF XS firmware has been upgraded to version 1.50 or later. For details regarding firmware upgrades, visit the following web page.  
<http://www.yamahasynt.com/products/motifxs/index.html>

1. **Copy the downloaded file 8E54OS\_.PGM, which contains display template files for use with USB flash-memory devices, to such a device.**
2. **Ensure that the MOTIF XS is turned off and then plug the USB flash-memory device into the USB TO DEVICE port.**
3. **While holding down the [UTILITY] button and the cursor [^] button, press in the POWER switch to turn the MOTIF XS back on. Be sure to keep the [UTILITY] and cursor [^] buttons held down until the MOTIF XS logo is displayed.**  
 A display for selecting a display template will appear.
4. **Select the desired display template using the cursor [<]/[>] buttons.**
5. **When the message “PRESS [ENTER] TO SELECT” is displayed, press the [ENTER] button.**  
 The process of updating the display with the selected template will begin.

## CAUTION

Never attempt to turn off the power while data is being stored (i.e., while a “Please keep power on” message is being displayed). If this precaution is not observed, your MOTIF XS may be rendered unable to startup correctly in future.

6. **When the message “Please turn off” is displayed, turn the instrument off and then back on.**  
 The MOTIF XS displays will have changed to reflect the copied display template.

---

## Restrictions on Display Template Usage

MOTIF XS display templates can be edited to create original display designs. It should be noted, however, that individual image files can be no larger than 8 kilobytes in size, and in addition, each must be named exactly the same as the corresponding file from the display template.

---