



POCKETRAK CX Update Guide

This document explains how to update the POCKETRAK CX firmware to the latest version.

Precautions (Please be sure to read this section first!)

- The user assumes full responsibility for the update.
- You should back up all important data before updating.
- If you fail to follow these instructions properly, or turn off the POCKETRAK CX while the update is in progress, the POCKETRAK CX may be damaged.
- If the POCKETRAK CX does not work properly after updating, and you've tried updating several times, please contact your Yamaha dealer.
- The screens shown in this guide are of Windows Vista. The screens, the menu items and buttons displayed on your computer may not exactly match those shown in this documentation, depending on the OS version or manufacturer of your computer.
- This documentation is copyrighted by Yamaha Corporation.
- Reproducing or modifying all or part of this documentation without permission is strictly prohibited.

Firmware version history

V1.03Y


- Now supports "PCM" recording format with line inputs. However, the menu item [AUTO DIVIDE] is disabled when you select the PCM format with line inputs.
- Solved a minor problem which may have occurred when some microSD cards were used.

V1.01Y

- Fixed a problem in which the POCKETRAK CX would occasionally operate abnormally (hang-up) when a microSD card was removed during recording.
- Fixed a problem in which the folder name would be occasionally displayed on the screen where the file number (song number) was usually displayed, when a blank folder with a long name was created in the MUSIC(M) folder and selected for playing.
- Fixed a problem in which the POCKETRAK CX could not sometimes play a divided file after dividing a file that was recorded in the MP3 320kbps mode.

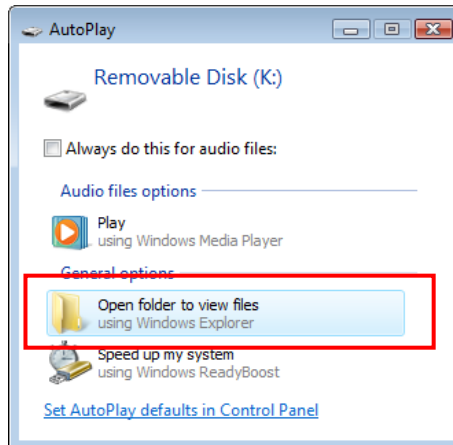
Updating the firmware (Total nine (9) steps)

1. You should save important data in the POCKETRAK CX to your computer for backup purposes before updating.
2. Download the latest firmware from the following website.
<http://www.yamahasynth.com/download/>

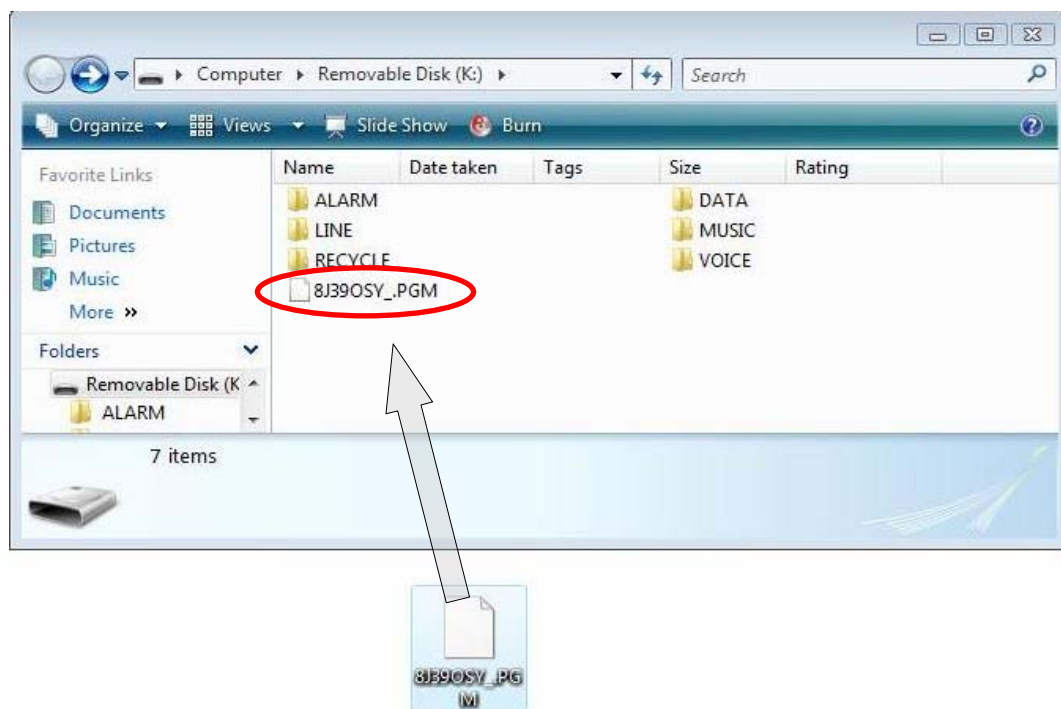
3. Turn off the power of the POCKETRAK CX, and then connect the POCKETRAK CX (with the microSD card inserted) to your computer via a USB cable.
4. Click  [Start] menu → [Computer], and then double-click the Removable Disk icon to open the window.

(Mac users: Double-click the NO NAME icon displayed on the desktop to open the window.)


Note If the “AutoPlay” screen appears, double-click “Open folder to view files” to open the window.

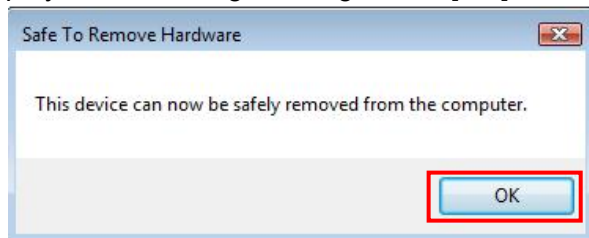


5. Copy the file “8J39OSY_.PGM” extracted from the downloaded file to the root folder of the Removable Disk. Please do not change the file name here.



Important Make sure to copy the file directly to the root folder of the Removable Disk (Mac users: NO NAME). If you copy the file to the DATA or VOICE folder etc, the POCKETRAK CX will not be updated.

6. Click the  icon (Safely Remove Hardware) on the taskbar at the bottom right of the Windows screen to disconnect the POCKETRAK CX from your computer, and then click [Safely remove USB Mass Storage Device].
7. After the computer displays the following message, click [OK], and then remove the USB cable.



Mac users:

Drag and drop the NO NAME icon on the desktop to the Trash to disconnect the POCKETRAK CX from your computer.

8. Turn on the power of the POCKETRAK CX, press and hold down the [MENU/ENTER] button for at least two seconds, select COMMON MENU→UPDATE→YES, and then press the [MENU/ENTER] button.

POCKETRAK CX starts writing the firmware.

Note If the UPDATE menu is not displayed in the COMMON MENU, make sure that the file is copied to the root folder of the Removable Disk, and the file name is not changed from “8J39OSY_.PGM”.

9. The writing will be completed after about ten seconds, and then return to the normal screen.
The update is now complete.

To check whether the firmware was correctly updated

Turn on the power of the POCKETRAK CX, press and hold down the [MENU/ENTER] button for at least two seconds, and then select COMMON MENU → VERSION. If the “Ver 1.03Y” is displayed on the screen, the firmware is correctly updated.

© 2009-2011 Yamaha Corporation
1111-B0